

Enjoy At Your Comfort

# POLSPAS

[WWW.POLSPAS.COM](http://WWW.POLSPAS.COM)



# POLSPAS



**Email**

[info@polspas.com](mailto:info@polspas.com)

**Address**

Ul Domki  
Kraków, Poland

**Phone**

+48 793 242 830



# KNOW US

POLSPAS is a polish producer of outdoor & indoor spas and pool. We are a manufacturer and also an OEM & ODM service provider. We are a firm believer of High -standard and top-quality services and Customer satisfaction are of paramount importance to us. Through the years of research and development combined with latest technology, we have become expert in hot tubs and pools industry providing the exclusive experiences to our customers. We devote ourselves to create the best products for customers who appreciate and pursue a healthy, relaxed and balanced lifestyle. We have exporting our hot tub spas to many countries, such as America, France, Middle East including UAE, Kuwait, Oman, Qatar, Saudi Arabia, America, India, Europe including Germany, Italy, the Netherlands, Belgium, Sweden, Australia and many more countries We have several workshops that hold advanced production lines for the production of quality spas. We strictly follow the 5S concepts and ISO9001 international standard to establish the quality management system. Our production team is lead by a group of well -experienced engineers and experts, who ensure our professionalism in product design, quality control and R&D. Our spas are made to comply with international electrical safety standards. All of our spas are approved under the CE, CB, KC, SAA and IEC, ISO9001 standards. We take great pride in our OEM & ODM ability and experience, and hope to establish cooperation relationship with people all over the world . Believe that our excellent product quality, competitive price and warm service will bring greatest benefits to our customers .

## SERIES

**Wellness**

**Euphoria**

**Vogue**

**Hollistic**

**Moska**



# PFS 310



Dimensions (L x W x H):205 x 175 x 79 cm(ABS)/81cm  
Total Jets (pcs): 25  
Pump 1(CE, TUV Approved):One-speed / 3.0HP  
Circulation Pump(CE, TUV Approved) :1 x 0.35HP  
Heater(CE, UL Approved):1 x 3.0KW  
Electrical Requirements:220-240V/50Hz,15A Max

Dimensions (L x W x H):200 x 200 x 79 cm(ABS)/81cm  
Total Jets (pcs):20  
Pump 1(CE, TUV Approved):One-speed / 2.0HP  
Circulation Pump(CE, TUV Approved) : 1 x 0.35HP  
Heater(CE, UL Approved):1 x 3.0KW  
Electrical Requirements:220-240V/50Hz,15.6A Max

# PFS 200





Dimensions (L x W x H):213x 213 x 88 cm(ABS)/90cm  
 Total Jets (pcs): 48  
 Pump 1(CE, TUV Approved): One-speed / 3HP  
 Pump 2(CE, TUV Approved):One -speed /2HP  
 Circulation Pump(CE, TUV Approved) : 1 x 0.35HP  
 Heater(CE, UL Approved):1 x 3.0KW  
 Electrical Requirements:220-240V/50Hz, 20AMax



Dimensions (L x W x H):213 x 213 x 9cm  
 Total Jets (pcs): 52  
 Pump 1(CE, TUV Approved): One-speed / 3.0HP  
 Pump 2(CE, TUV Approved):One-speed / 3.0HP  
 Circulation Pump(CE, TUV Approved) : 1 x 0.5HP  
 Heater(CE, UL Approved):1 x 3.0kW  
 Electrical Requirements:220-240V/50Hz, 22A  
 Max.



# PFS 410

# PFS 430



Total Jets (pcs): 21  
Pump 1(CE, TUV Approved):Two-speed / 2.0HP  
Circulation Pump(CE, TUV Approved) : N/A  
Heater(CE, UL Approved):1 x 3.0KW  
Electrical Requirements:220-240V/50Hz, 13AMax

# PFS 512



# PFS 400



Dimensions (L x W x H):200 x 200 x 92 cm  
Total Jets (pcs): 50  
Pump 1(CE, TUV Approved): One-speed / 2HP  
Pump 2(CE, TUV Approved):One -speed /2HP  
Circulation Pump(CE, TUV Approved) : 1 x 0.5HP  
Heater(CE, UL Approved):1 x 3.0KW  
Electrical Requirements:220-240V/50Hz, 20A Max



# PFS 520-L



Dimensions (L x W x H):230 x 230 x 92 cm

Total Jets (pcs): 41

Pump 1(CE, TUV Approved):One-speed / 3.0HP

Circulation Pump(CE, TUV Approved) :1 x 0.5HP

Heater(CE, UL Approved):1 x 3.0KW

Electrical Requirements:220-240V/50Hz, 22A Max

Dimensions (L x W x H):200 x 200 x 88 cm(ABS)/90cm

Total Jets (pcs): 31

Pump 1(CE, TUV Approved):One-speed / 3.0HP

Circulation Pump(CE, TUV Approved) : 1 x 0.35HP

Heater(CE, UL Approved):1 x 3.0KW

Electrical Requirements:220-240V/50Hz, 15.6A Max



# PFS 520



# PFS 600



Dimensions (L x W x H): 225x225x 92.5 cm(ABS)/94.5cm  
 Total Jets (pcs): 48  
 Pump 1(CE, TUV Approved): One-speed / 3.0HP  
 Pump 2(CE, TUV Approved): One-speed / 3.0HP  
 Circulation Pump(CE, TUV Approved) : 1 x 0.35HP  
 Heater(CE, UL Approved): 1 x 3.0KW  
 Electrical Requiren

Dimensions (L x W x H): 210x 210 x 88 cm(ABS)/90cm  
 Total Jets (pcs): 82  
 Pump 1(CE, TUV Approved): One-speed / 3HP  
 Pump 2(CE, TUV Approved): One-speed / 3HP  
 Circulation Pump(CE, TUV Approved) : 1 x 0.35HP  
 Heater(CE, UL Approved): 1 x 3.0KW  
 Electrical Requirements: 220-240V/50Hz, 22A Max



# PFS 521



# PFS 601



Dimensions (L x W x H):230 x 230 x 92 cm  
Total Jets (pcs): 93  
Pump 1(CE, TUV Approved):One-speed / 3HP  
Pump 2(CE, TUV Approved): One-speed / 3HP  
Circulation Pump(CE, TUV Approved) :1 x 0.5HP  
Heater(CE, UL Approved):1 x 3.0KW  
Electrical Requirements:220-240V/50Hz, 22AMax

# PFS 610



Dimensions (L x W x H):220 x 220 x 92 cm  
Total Jets (pcs): 32  
Pump 1(CE, TUV Approved):One-speed / 2HP  
Pump 2(CE, TUV Approved): One-speed / 2HP  
Circulation Pump(CE, TUV Approved) :1 x 0.5HP  
Heater(CE, UL Approved):1 x 3.0KW  
Electrical Requirements:220-240V/50Hz, 22AMax



Dimensions (L x W x H): 225 x 225 x 92 cm  
Total Jets (pcs): 61  
Pump 1(CE, TUV Approved): One-speed / 3HP  
Pump 2(CE, TUV Approved):One -speed /3HP  
Circulation Pump(CE, TUV Approved) : 1 x 0.5HP  
Heater(CE, UL Approved):1 x 3.0KW  
Electrical Requirements:220-240V/50Hz, 20AMax



# PFS 611

Dimensions (L x W x H) 225 x 225 x 92 cm  
Total Jets (pcs): 44  
Pump 1(CE, TUV Approved): One-speed / 3.0HP  
Pump 2(CE, TUV Approved):One-speed / 3.0HP  
Circulation Pump(CE, TUV Approved) : 1 x 0.5HP  
Heater(CE, UL Approved):1 x 3.0kW  
Electrical Requirements:220-240V/50Hz, 22A Max.



# PFS 620





# PFS 860

Dimensions (L x W x H): 225x238x88 cm (ABS)/90 cm

Total Jets (pcs): 64

Pump 1 (CE, TUV Approved): One-speed / 3.0HP

Pump 2 (CE, TUV Approved): One-speed / 3.0HP

Circulation Pump (CE, TUV Approved): 1 x 0.35HP

Heater (CE, UL Approved): 1 x 3.0KW

Electrical Requirements: 220-240V/50Hz, 22 A Max

Dimensions (L x W x H): 230 x 230 x 92 cm

Total Jets (pcs): 65

Pump 1 (CE, TUV Approved): One-speed / 3HP

Pump 2 (CE, TUV Approved): One-speed / 3HP

Circulation Pump (CE, TUV Approved): 1 x 0.5HP

Heater (CE, UL Approved): 1 x 3.0KW

Electrical Requirements: 220-240V/50Hz, 22A Max



# PFS 621-1





# PFS 2250MC

size : 2250x1000x780mm

net weight : 180kg

seat capacity: 2 seats

water capacity :180L

Total Massage jets :29

LX booster pump: 1x2HP 2speed

Interior Acrylic: Aristec USA

Bottom Base : ABS

Big Underwater LED Light:

Pillow : 2

Heater : 2KW

Dimensions (L x W x H):193 x 153 x 78 cm

Total Jets (pcs): 21

Pump 1(CE, TUV Approved):One-speed / 2HP

Circulation Pump(CE, TUV Approved) :1 x 0.5HP

Heater(CE, UL Approved):1 x 3.0KW

Electrical Requirements:220-240V/50Hz, 16A Max



# PFS Q1





# PFS 320DAI

Size: 200x200x82cm

Seat: 4 Adults including Lounges 2

Total Jets: 26

Shell from Aristech (USA)

Balboa(USA) Control System +Panel

Bottom Light: Multi colour LED Under water light 20 pcs perimeter

Multicolour LED lights along waterline With water fountain option

SHELL Color: Midnight Opal(Black) (Luxury Shell

Colour) CABINET Color: Black and Dark Grey

Size: 218x218x90cm

Seat: 5 Adults including Lounges: 2

Total Jets: 38 Jets

Shell from Lucite (USA)

Control Panel: XSPA SPA TOUCH+ WIFI Inner Bluetooth and Speaker system

One Big Multi colour LED Under water light 16 Perimeter

LED lightings around waterline

SHELL Color: Sterling Silver (Luxury Colour)

CABINET Color: STYLE A (Dark Grey)



# PFS 522





# PFS 310KAI

Size: 200x200x82cm

Seat: 6 Adults including Lounge 1

Total Jets: 25

Shell from Aristech (USA)

Balboa(USA) Control System +Panel

Bottom Light: Multi colour LED Under water light Along with Waterline

Multicolour LED lights With water fountain option

Size: 216x216x92cm

Seat: 5 Adults including Lounge 2

Total Jets: 27

Shell from Aristech (USA)

Balboa(USA) Control System +Panel

Bottom Light: Multi colour LED Under water light Along with Waterline

Multicolour LED lights With water fountain option S



# PFS 320KAI





# PFS SWIM431

Dimension :- 400 x 225 x 148 cm

Seating Capacity :- 1 Adult

Lounge Seats :- 0

Total Jets :- 8 Jets

Spa Shell Usa: Lucite Sterling silver

Spa Cabinet Material: PS Wood-Plastic Composite Panels

Cabinet Frame:Stainless Steel

Total Jets Pcs: 8

Ozone Jets (pcs) ;1

Pump 1(CE, TUV Approved): Two-speed / 3.0HP

Pump 2 (CE, TUV Approved):One-speed / 4.0HP



Dimension :- 572 x 225 x 128 cm

Seating Capacity :- 6 Adults

Lounge Seats :- 2

Total Jets :- 35 Jets

Spa Shell Usa:Lucite Sterling silver

Spa Cabinet Material:PS Wood-Plastic Composite Panels

Cabinet Frame:Stainless Steel

Jet Ring Trim usa:Stainless Steel Jets

# PFS SWIM 650



Dimension :- 428 x 225 x 128 cm  
 Seating Capacity :- 2 Adults  
 Lounge Seats :- 0  
 Total Jets :- 35 Jets  
 Spa Shell Usa:Lucite Sterling silver  
 Spa Cabinet Material:PS Wood-Plastic Composite Panels  
 Cabinet Frame: Stainless Steel  
 Jet Ring Trim usa:Stainless Steel Jets  
 Ozone Jets (pcs): 1  
 Pump 1(CE, TUV Approved): One-speed / 3.0HP  
 Pump 2 (CE, TUV Approved): One-speed / 3.0HP  
 Pump 3 (CE, TUV Approved):One-speed / 3.0HP  
 Pump 4 (CE, TUV Approved) :One-speed / 3.0HP  
 Circulation Pump:1 x 0.5HP  
 Heater (CE, UL Approved):1 x 3.0kW  
 Lighting (ETL Approved):1 x 12V,  
 Multi-colored LED Underwater Light  
 Electrical Requirements: 220V-240V/50HZ; 42A Max



**PFS SWIM430**

Dimension :- 572 x 225 x 150 cm  
 Seating Capacity :- 1 Adult  
 Lounge Seats :- 1  
 Total Jets :- 15 Jets  
 Spa Shell Usa:Lucite Sterling silver  
 Spa Cabinet Material: PS Wood-Plastic Composite Panels  
 Cabinet Frame: Stainless Steel  
 Pump 1(CE, TUV Approved): One-speed / 4.0HP  
 Pump 2 (CE, TUV Approved): One-speed / 4.0HP  
 Pump 3 (CE, TUV Approved): One-speed / 3.0HP  
 Pump 4 (CE, TUV Approved): One-speed / 2.0HP  
 Circulation Pump: 1 x 0.5HP  
 Heater (CE, UL Approved): 1 x 3.0kW  
 Lighting (ETL Approved): 1 x 12V, Multi-colored LED  
 Underwater Light



**PFS SWIM460**





# PFS 4000FA

Dimension :- 530 x 225 x 150 cm  
 Seating Capacity :- 5 Adults  
 Lounge Seats :- 1  
 Total Jets :- 41 Jets  
 Spa Shell Usa: Lucite Sterling silver  
 Spa Cabinet Material: PS Wood-Plastic Composite Panels  
 Cabinet Frame: Stainless Steel  
 Ozone Jets (pcs): 12  
 Pump 1(CE, TUV Approved): One-speed / 4.0HP  
 Pump 2 (CE, TUV Approved): One-speed / 4.0HP  
 Pump 3 (CE, TUV Approved): One-speed / 3.0HP  
 Pump 4 (CE, TUV Approved): One-speed / 3.0HP  
 Circulation Pump: 1 x 0.5HP  
 Heater (CE, UL Approved): 1 x 3.0kW  
 Lighting (ETL Approved): 1 x 12V,  
 Multi-colored LED Underwater Light

Size: 400\*228\*135cm  
 Swimming with 2 lounges and 1 Seat  
 Shell from Aristech USA  
 03 river jets  
 Control Panel: Balboa USA LX BOOSTER  
 PUMP:2x3HP+2x2HP  
 One Big Multi colour LED Under water light LED  
 lightings around waterline



# PFS SWIM 480





# PFS 590BQA45

Size: 450\*225\*154cm  
 Shell from Aristech USA  
 03 river jets  
 Control Panel: Balboa USA  
 LX BOOSTER PUMP: 2x3HP+2x2HP  
 One Big Multi colour LED Under water light  
 LED lightings around waterline with Waterfall option

Size: 390x2250x120cm  
 Shell from Aristech USA  
 03 river jets  
 Control Panel: Balboa USA  
 One Big Multi colour LED Under water light  
 LX BOOSTER PUMP: 3x3HP  
 LED lightings around waterline



# PFS 390QQA





# PFS 590BQA59

SSize: 590\*225\*154cm

Shell from Aristech USA

03 river jets

Control Panel: Balboa USA

LX BOOSTER PUMP: 2x3HP+2x2HP

One Big Multi colour LED Under water light

LED lightings around waterline with Waterfall option

Size: 550\*225\*154cm

Shell from Aristech USA

03 river jets

Control Panel: Balboa USA

One Big Multi colour LED Under water light

LX BOOSTER PUMP: 2x3HP+2x2HP

LED lightings around waterline



# PFS 590BQA55





# PFS 3050BMC

Size: 305x220x92cm

Seat: 8 Adults including 2 Lounges

Total Jets: 66 ,

Shell from Aristech (USA)

Control Panel: Balboa USA

Bottom Light: Multi colour LED Under water light

20 pcs multi colour LED lights along waterline

Bluetooth Speaker 4 multi colour corner

Cabinet Lights with waterfall



Dimension :- 380 x 225 x 91 cm

Seating Capacity :- 9 Adults

Lounge Seats :- 2

Total Jets :- 95 Jets

Water Capacity: 1700 liters

Dry Weight: 590kg

Filled Weight: 2290 kg

Spa Shell Usa: Lucite® Acrylic(Sterling silver)

Spa Cabinet Material: PS Wood-Plastic Composite Panels

Cabinet Frame:LVJ stainless steel

Pump 1(CE, TUV Approved): One-speed / 3.0HP

Pump 2 (CE, TUV Approved): One-speed / 3.0HP

Pump 3 (CE, TUV Approved): One-speed / 3.0HP

Circulation Pump: 1 x 0.5HP

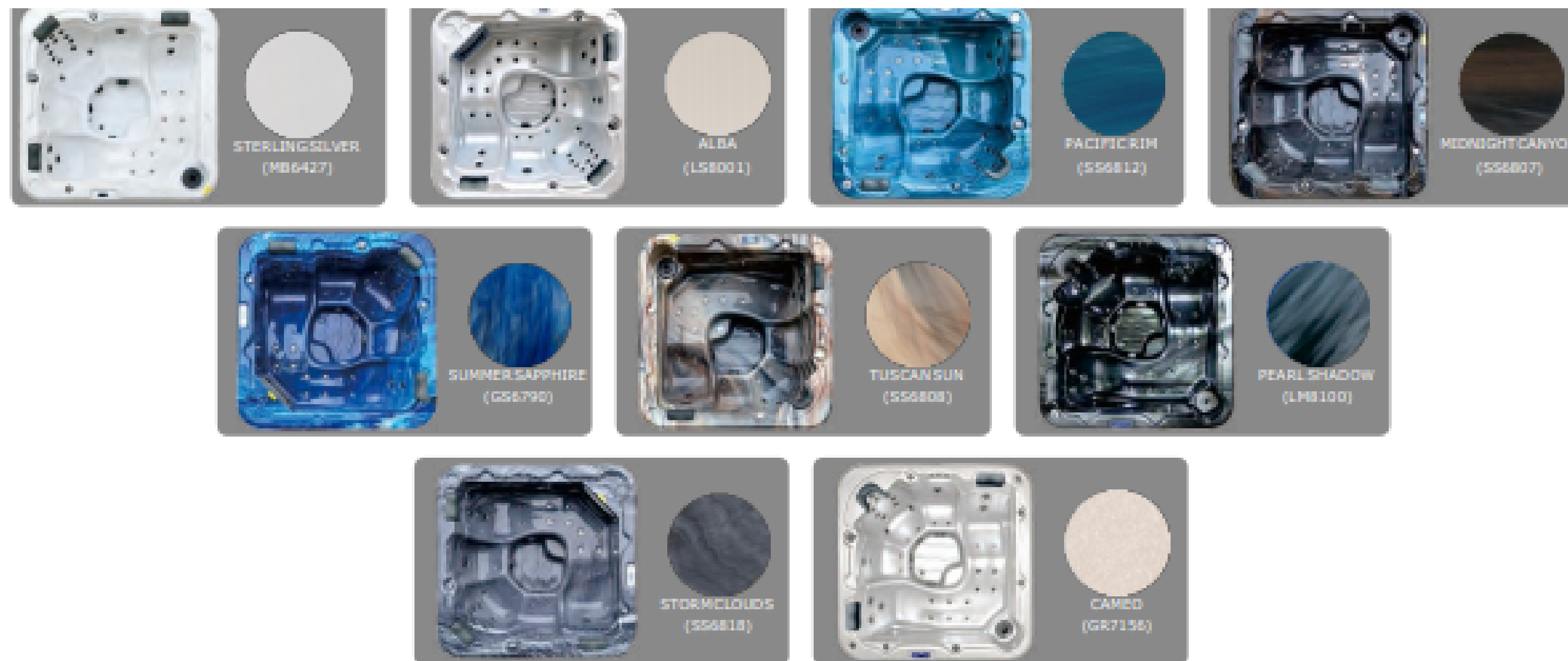
Heater (CE, UL Approved):1 x 3.0kW

# PFS PARTY870





# SHELL COLOURS

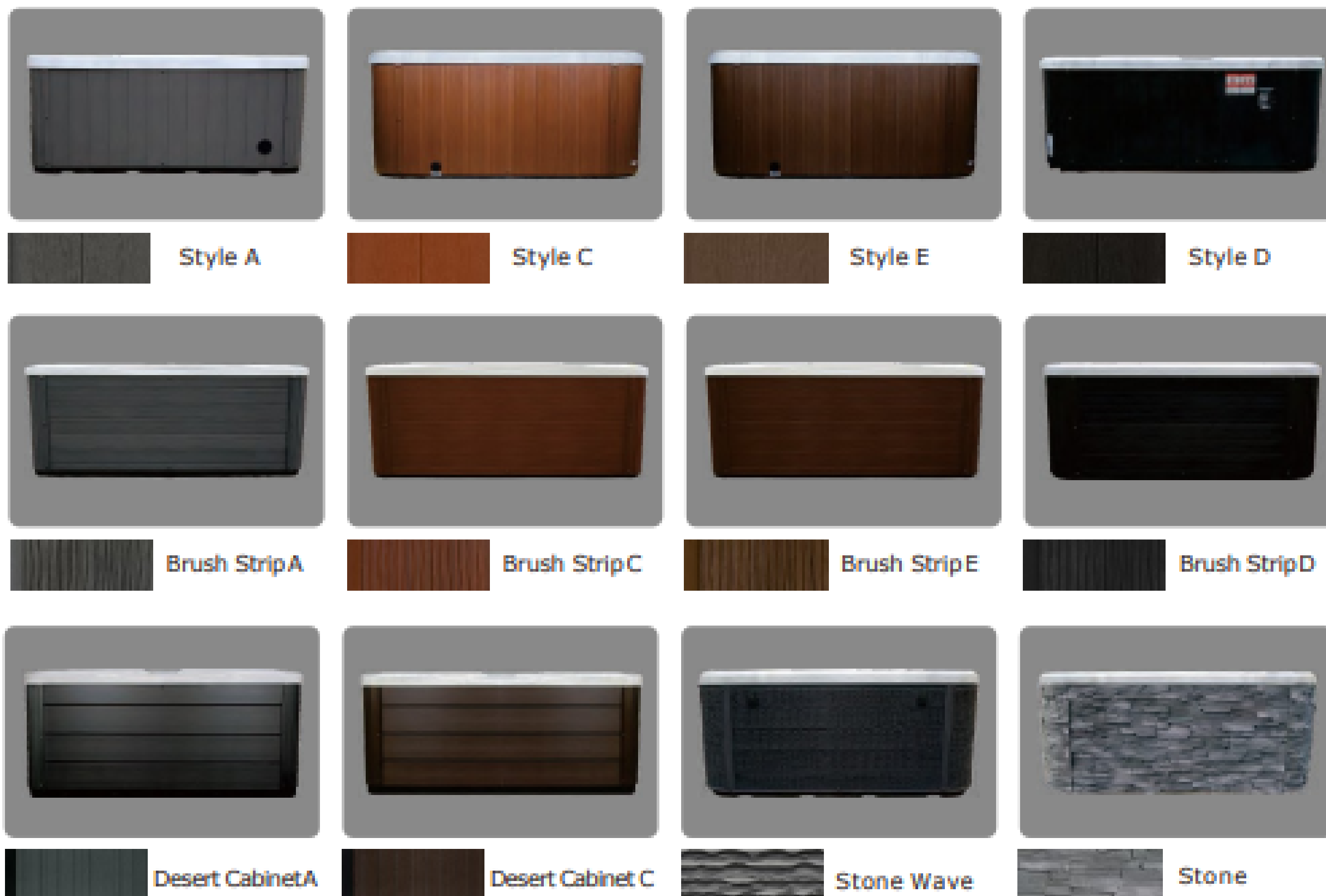


## Lucite AcrylicShell

All our shells are come from Lucite acrylic, one of the best in leading spa shells. Lucite acrylic maintains excellent resistance to weathering, infrared/ ultraviolet radiation, staining and scratching. The exceptional quality of the high gloss surface enhances its appearance and serviceability. Lucite acrylic is available with built-in Microban®. Microban® is an antimicrobial that is molded in the acrylic to protect you from bacteria, odors and stains. Microban® antimicrobial protection is built-in the Lucite Acrylic during manufacturing to provide continuous antimicrobial product protection, giving you peace of mind that your spa is cleaner and safer for your family. Lucite Acrylic Shell Spa Colors Available Colors shown on this page are scans of actual product, but are for identification only. Additional cost and time frame will apply. Prices and specifications are subject to change without



# CABINET COLOURS

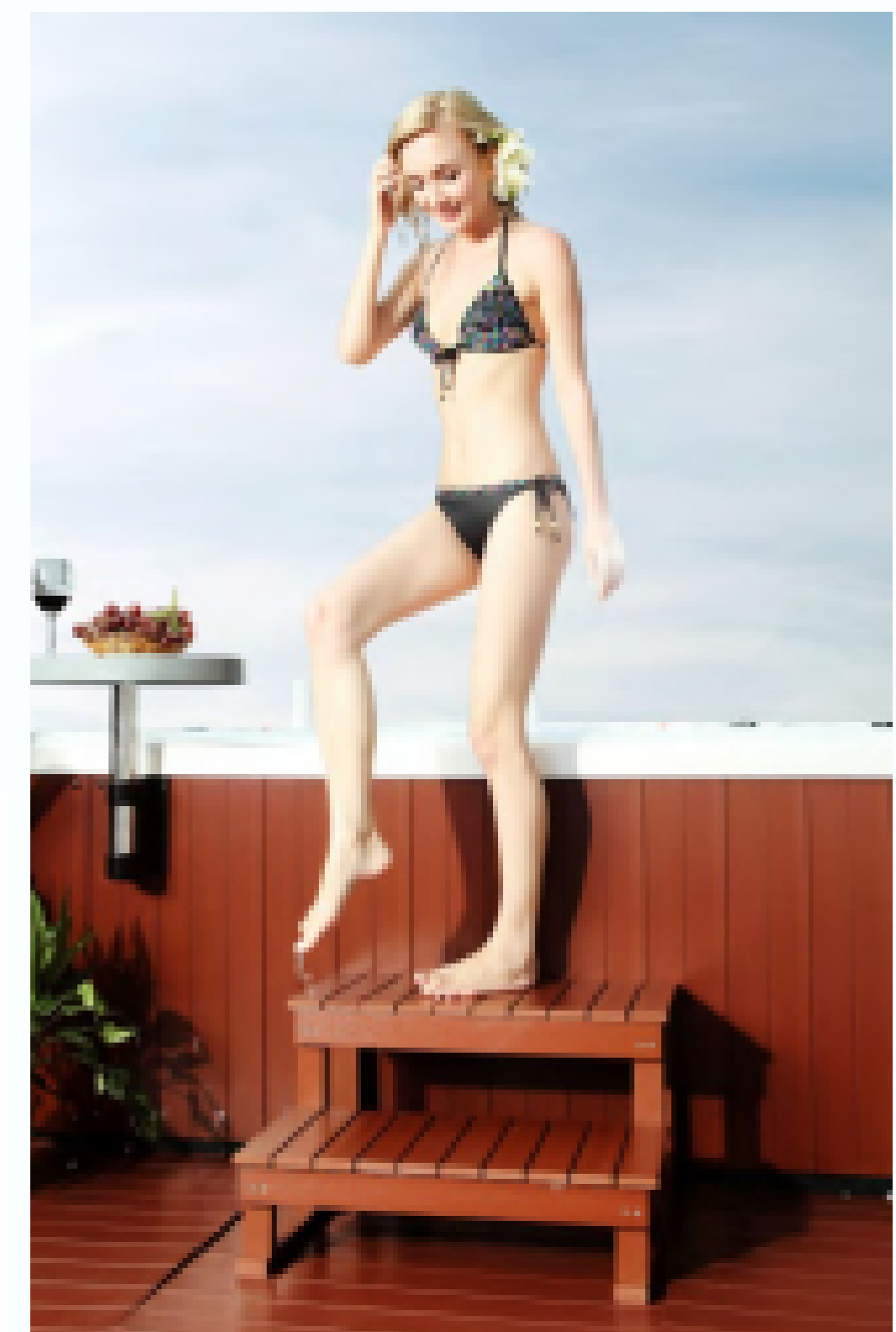


Cabinet Spa cabinet is another place where functionality comes into play. All our spas come equipped with a maintenance-free synthetic cabinet. Our superior synthetic cabinets look somewhat like real wood from a distance with the imitation wood-grain pattern, and always look brand-new. They virtually eliminate splitting, cracking, fading and warping and is the same material found in similar plastic products such as fences, gazebos and decks. They are durable, water resistant and UV-resistant, providing your spa with exquisite beauty for years to come. And they can be maintained simply with a damp cloth and mild detergent. Our Cabinets are a perfect way of enhancing the ambience



# SPA COVER

Spa Cover Our UV-resistant vinyl cover contains high-density foam for maximum heat retention. The key features of our spa cover are as follows: High Density 100% Virgin Insulating Foam Core: Specially formulated for superior insulation and strength. Constructed with 1.5 lbs & 2 lbs density foam. Heat Sealed Moisture Barrier: Barrier providing protection against premature moisture absorption. 20 Gauge Aluminum C-Channel: Lighter, extra strength and corrosion proof, ensuring structural integrity for the life of cover. Energy Efficient: Enhanced insulating power to reduce heating cost. Corrosion Proof Nylon Zipper: Large #8 zipper with protective flap will not corrode or pull apart. Protective Custom Fitted Tapered Skirt: Creates an air tight seal to protect against dust, dirt, wind and environmental contaminants. Superior Steam Sealer: Provide a tight seal at the edge of the hinge, preventing heat and steam loss. Spa Handles: Sturdy handles for easy handling. Available with two or four handles. Child Resistant Lock Down Straps: 4 durable lock straps with keys. Exceeds ASTM requirements for safety and security purposes



## Spa Step

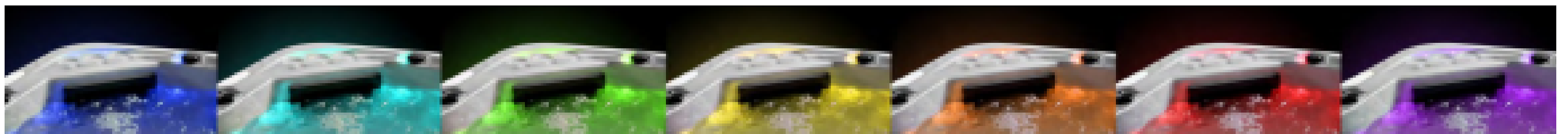
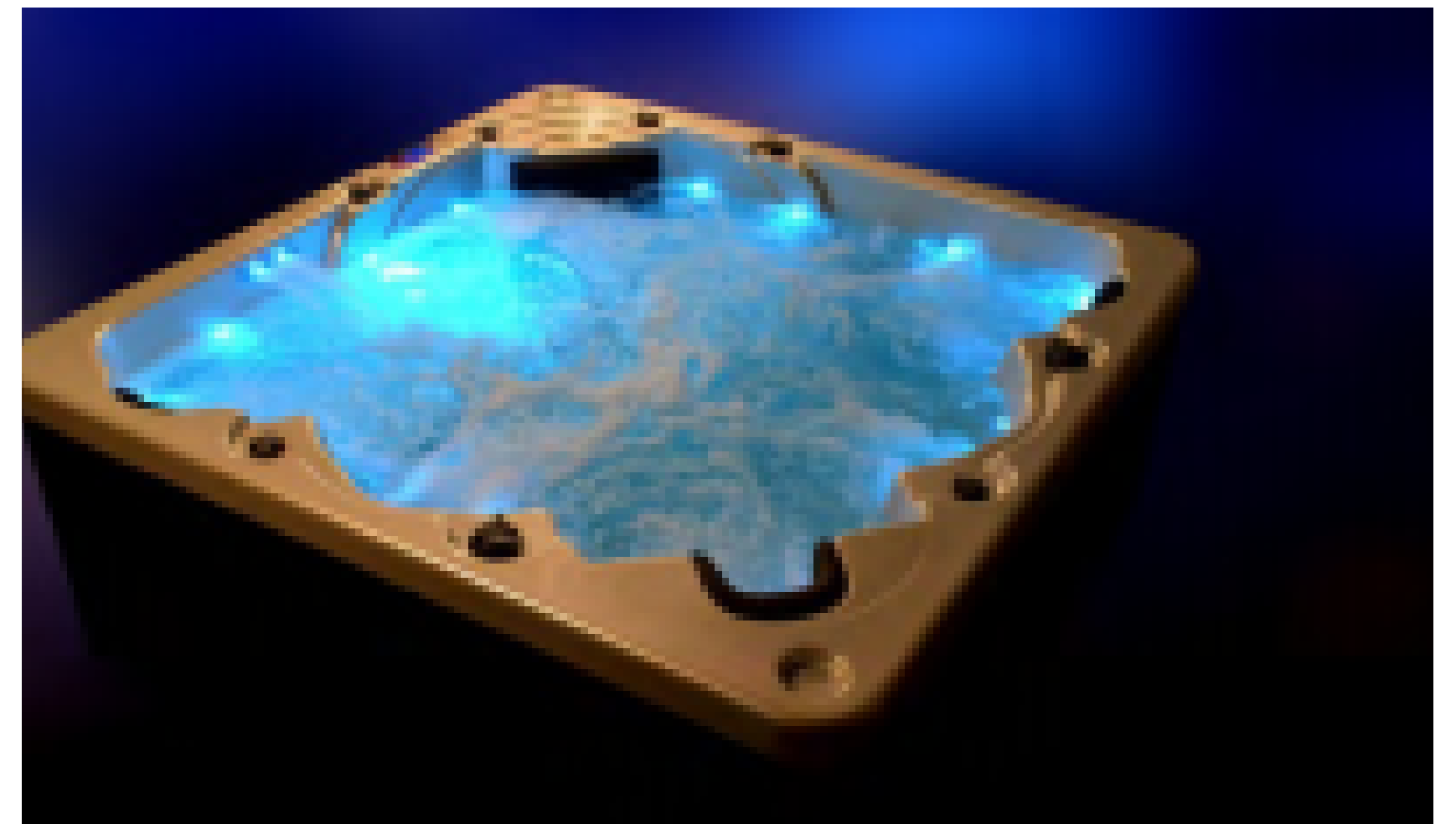
Our steps are extremely durable and virtually maintenance-free. Moreover, our steps are the perfect complement to our spas because they are made from the same material used in our spas' cabinets. The addition of this elegant step with our spa will certainly enhance the appearance of the overall spa package.



# Perimeter LED Lighting

This feature allows the spa owner to retain a favorite color operation mode. There are 13 modes. And the color operation modes are available:

- Spectrum Quick Dance: fade through all 8 colors, 1 second/color
- Spectrum Slow Dance: fade through all 8 colors, 10 seconds/ color
- Color Burst: strobe effect change through all 8 colors, 5 seconds/ color
- Spectrum Slow Dance: fade through all 8 colors, 6 seconds/ color
- Spectrum Quick Dance: fade through all 8 colors, 0.05 second/ color
- Red
- Green
- Blue
- Yellow
- Cyan
- Orange
- Purple
- White

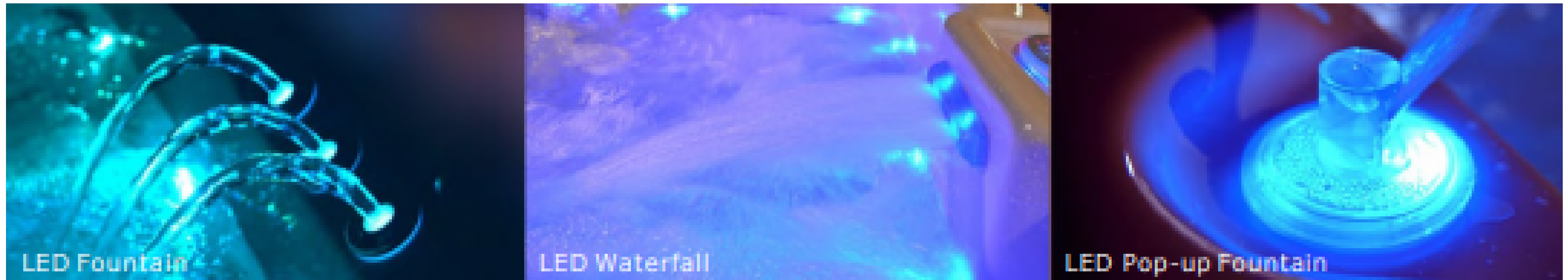


Bottom(Pedestal Base) We use the thick ABS and fiberglass bottom as a standard feature in our spas. Our customers of course get the benefit from such a stronger, long-lasting spa with this bottom. Our fiberglass bottom is formed around the bottom of the cabinetry, and serves the purposes of added structural integrity, increased insulation from the elements, and protection from rodents and insects entering/tampering with the spa interior

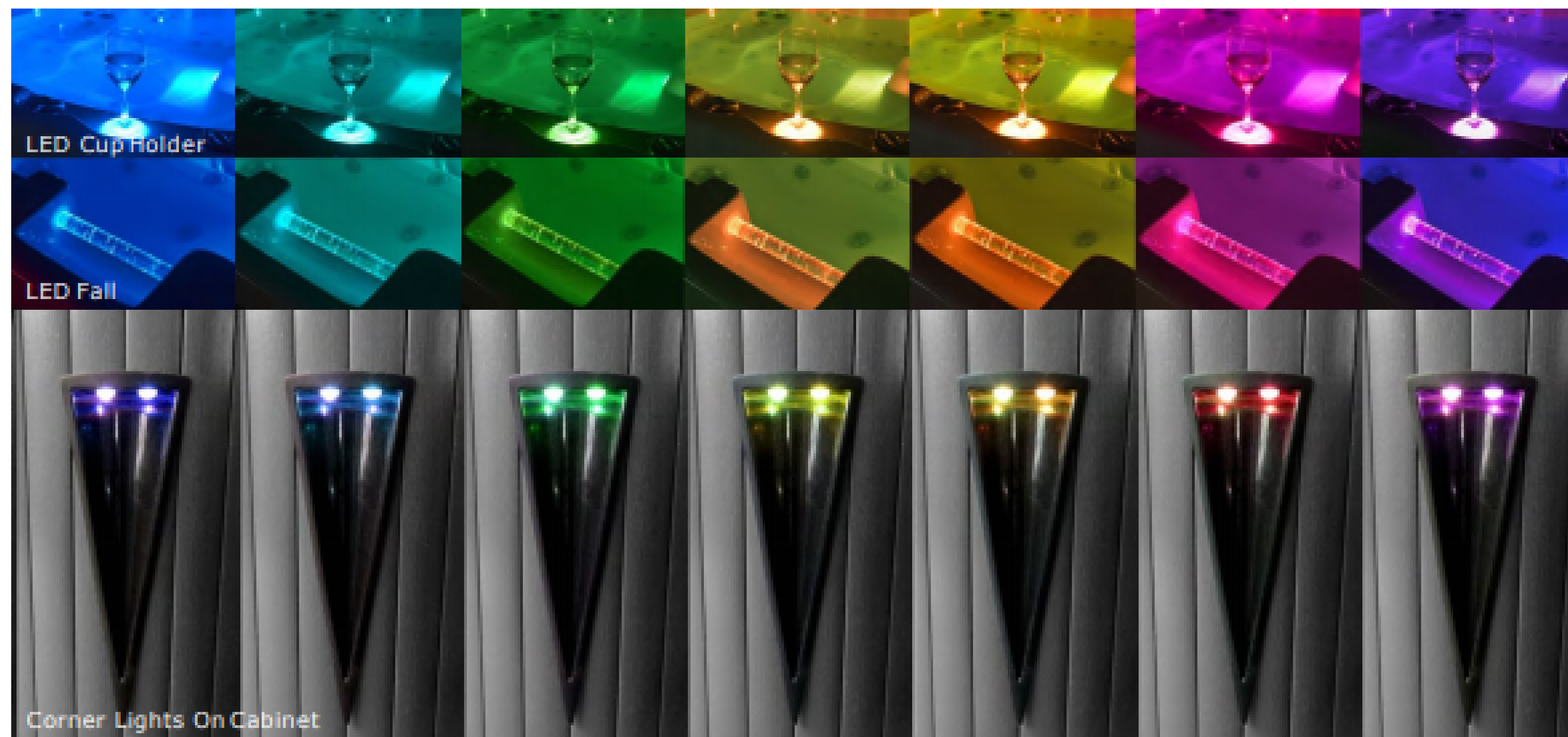




# Water Features



## LED LIGHTING





# Spa Control System

## BALBOA ControlSystem



BP2100G1+TP800



BP6013G2/G3+TP600CE



BP6013G1+TP400P



GS100SZ(2KW)+VL260

## GECKO ControlSystem



IN.YT-7-CE+K806



IN.YE-5-CE+K506



IN.YE-3-CE+K300





## **XSPA + WIFI**

### **XSPA control system advantages:**

- 1-EACH CHANNEL OUTPUT AND DETECTION CHANNELS, THERE IS A BACKUP CHANNEL, SUCH AS A CHANNEL IS BROKEN, CAN BE TRANSFERRED TO ANOTHER CHANNEL, QUICKLY SOLVE THE PROBLEM.
- 2.FAULT PROMPT FUNCTION: EACH CHANNEL LED LIGHTS HAVE FAULT PROMPT FUNCTION, CAN QUICKLY AND ACCURATELY DETERMINE THE FAULT
3. THREE MODES: STANDARD,ECONOMY,SLEEP, TO MEET DIFFERENT NEEDS, WHEN YOU DON'T USE THE SPA, SET IN SLEEP, SAVE ENERGY.
4. SMART SELF-PROTECTED: HIGH TEMPERATURE, LOW TEMPERATURE, AUTOMATIC WATER AND WATER PROTECTION
5. TIME OF THE CIRCULATION CAN BE SET.
6. THE DISPLAY CAN BE ROTATED TO FACILITATE VIEWING IN THE CYLINDER.
7. FULL AUTHORITY: PARENTS CAN LOCK THE KEYS ON THE PANEL TO PREVENT CHILDREN OPERATION. SEMI-AUTHORITY: THE RESORT LOCK FUNCTION, LOCK PART OF THE SET, THE USER CAN USE THE PRODUCT, BUT CANNOT MODIFY THE SETTINGS, ADMINISTRATORS HAVE PERMISSION TO MODIFY.
- 8.CONTROL WITH HEAT PUMP PORT, CAN BE CONNECTED WITH HEAT PUMP.
9. BACKUP PANEL : WHEN THE MAIN PANEL FAILURE PRODUCT DOES NOT WORK, IT CAN REPLACE THE MAIN PANEL TO OPERATE AND USE. 10
- DISPLAY PANEL IS WATERPROOF CONNECTOR, PLASTIC SEAL, WATERPROOF RATING IP65.
11. CONTROL IS IN SMALL SIZE, FOR SMALLER SPACE. 12 CAN BE PRINTED LOGO ON THE PANEL.



# MASSAGE JETS

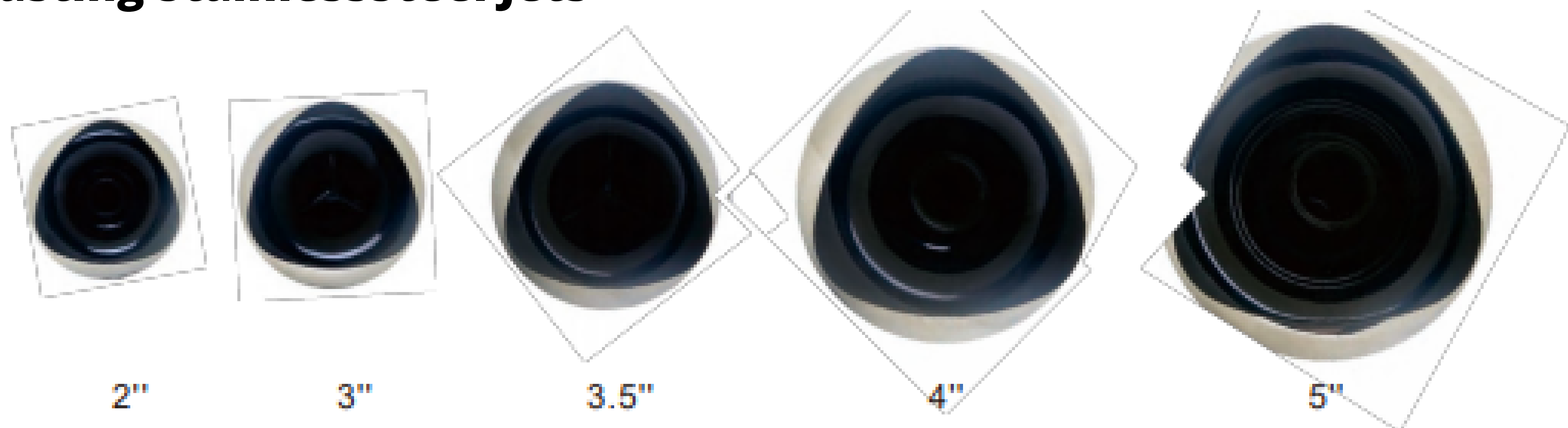
Our jet system features a variety of jets allow you to massage different muscles with different water pressure. We can deliver the healing flow of water from the jets to specific spots on the body. These spots, known as pressure points, can lessen or eliminate pain if triggered properly. Relaxing in polspa is the ultimate in effective, natural relief for your tired body and frayed nerves. Thousands of air bubbles combine with warm water to caress the body parts that suffer the brunt of the day. Specifically selected jets are positioned at strategic body points offering healing therapy to shoulders, neck, back, legs; right down to the feet! It is proven that massaging the feet; known as reflexology, actually helps to relieve tension in other parts of the body

## Standard Jets:

Normal Stainlesssteel Although this will save you money, the quality of massage, flexibility of feeling, and quality of construction far offsets the cost. The time-tested proven performance of our jet system assures you reliable jetting that you will enjoy for years to com



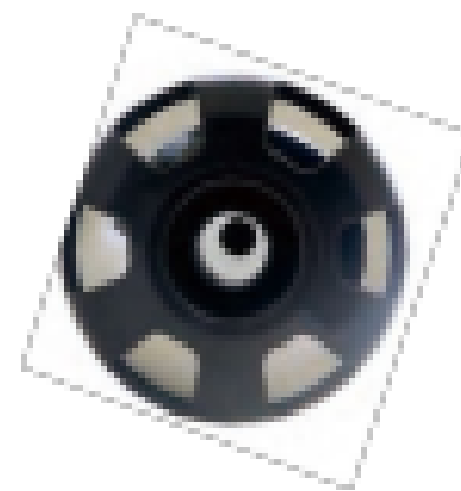
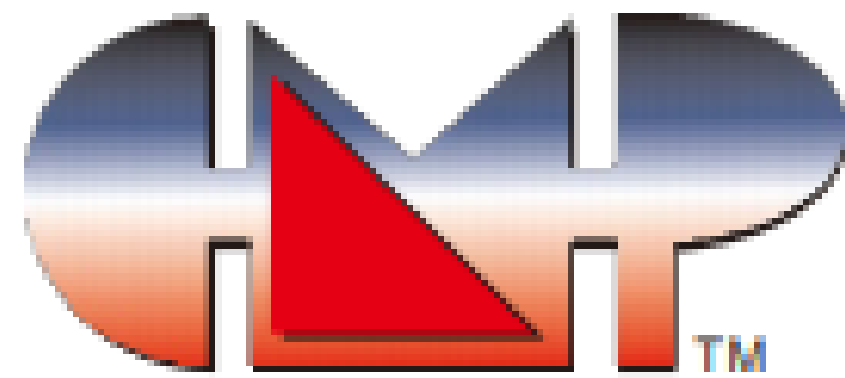
## Long Lasting StainlessSteel Jets





# CMP Stainless Steel Jets

Our stainless steel jets offer a unique design that performs as good as it looks. The jet fittings look superb and will never rust, degrade or discolour, despite exposure to elevated temperature and sanitary chemicals



2"



3"



4"



5"

Eyebrow Faced Jets



2"



3"



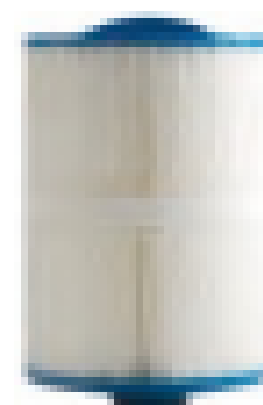
4"

- 1" Director Jets
- 2" Director Jets
- 3" Double Rotational(Twin Roto) Jet 3.
- 5" Rotational Jets
- 4" Directional Jet
- 5" Directional Jet

LEAF FILTER AND PAPER



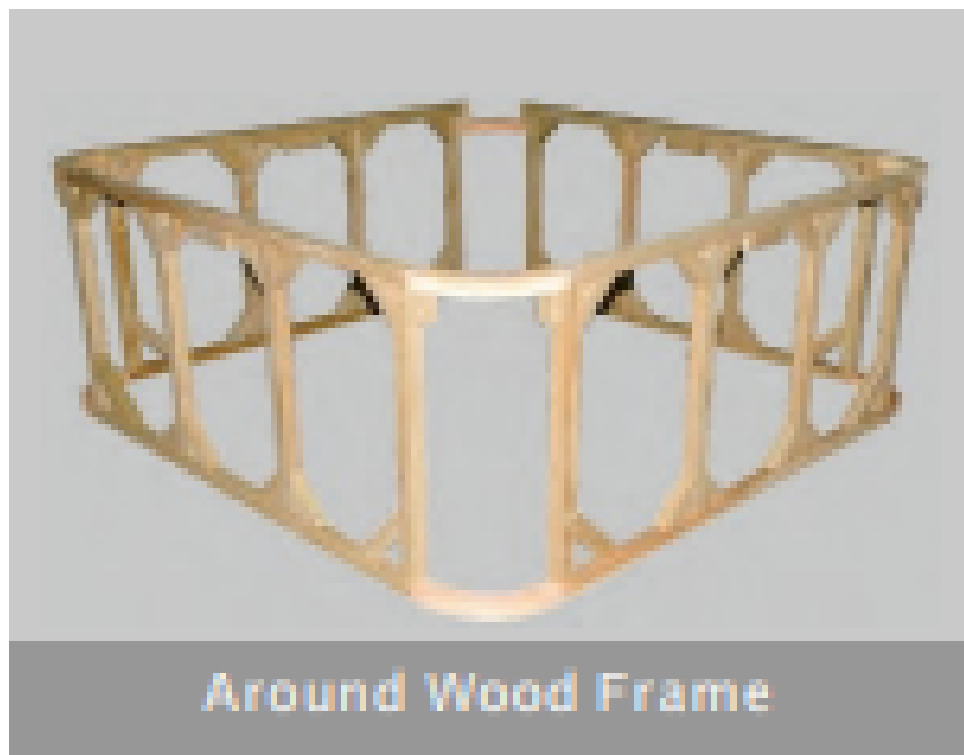
SKIMMER FILTER AND PAPER





# INSULATION

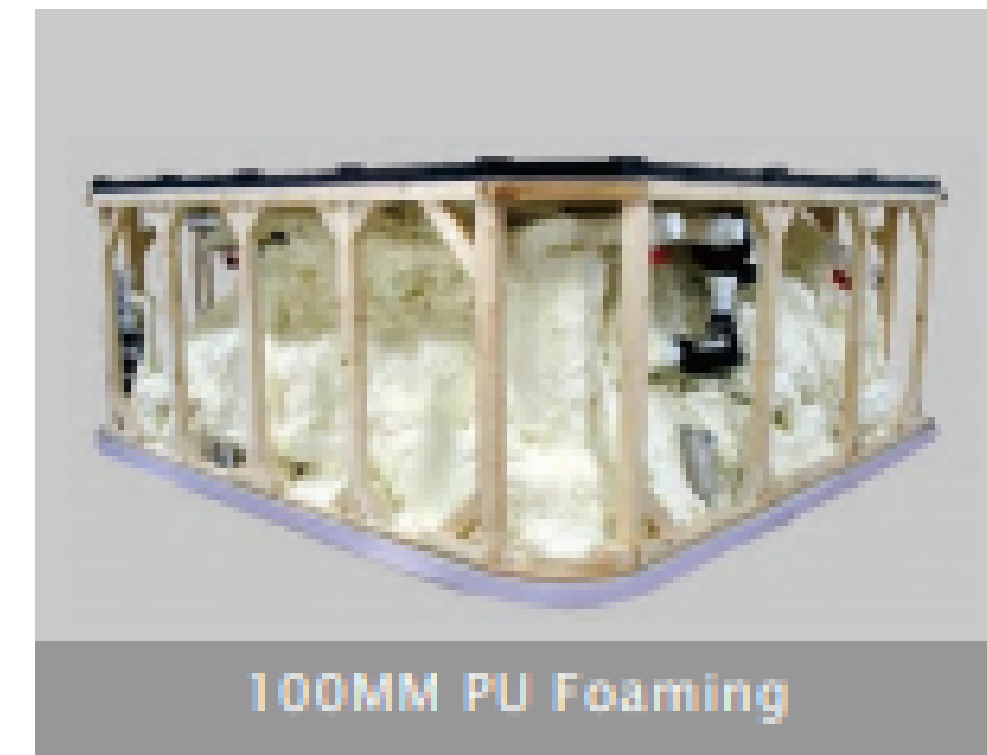
Finding a spa with efficient and effective insulation is to your benefit, because it can cut down on monthly operating costs. Good insulation will trap in the heat from your spa and create an effective barrier between the cold outdoors and the warmth in your spa. Your spa will not have to work as hard to maintain a warm water soaking temperature, therefore lowering the operating costs. Now, we can provide you with a spa with insulation that works for you. You will maximize energy efficiency and minimize your cost-of-use with our insulation system



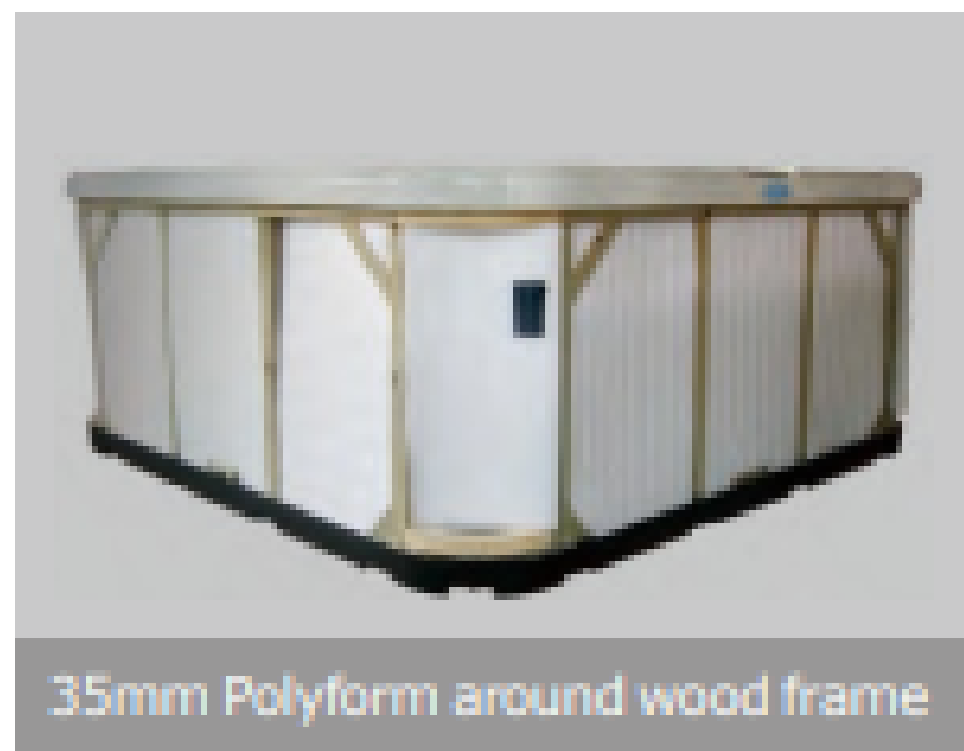
Around Wood Frame



20MM PU Foaming



100MM PU Foaming



35mm Polyform around wood frame



Bubble foil around wood frame



Spa Cover & Cover Lifter



## FIBER GLASS BOTTOM

Unlike our competitors, we use the thick fiberglass bottom as a standard feature in ALL our spas. Our customers of course get the benefit from such a stronger, long-lasting spa with this bottom. Our fiberglass bottom is formed around the bottom of the cabinetry, and serves the purposes of added structural integrity, increased insulation from the elements, and protection from rodents and insects entering/tampering with the spa interior.



# Aromatherapy System

Aromatherapy is the use of selected fragrances to affect mood and promote health. Combine your hydrotherapy with aromatherapy and let the fragrances help you unwind with an invigorating and relaxing spa experience. Enjoying yourself in our spa with an air blower included a canister is often provided where scented beads in a net bag can be added. The air from the blower passes over these beads, picking up the scent, before it is injected into the spa. Various beads are available. Some fragrances can be added directly to spa water but these often adversely affect the water quality, cause foaming or use up the sanitizer (chlorine / bromine).



## Air Jets

An optional air jet system can produce air bubbles from the fittings throughout the spa to provide a very gentle soft-tissue massage

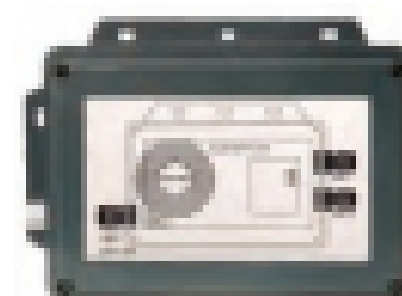
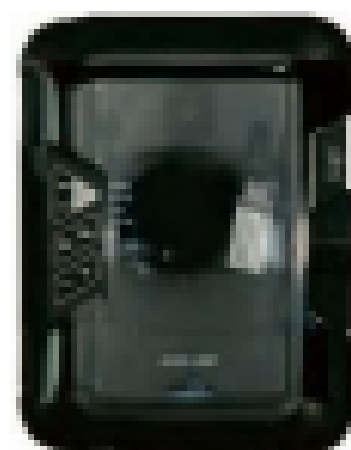


## Air Pump



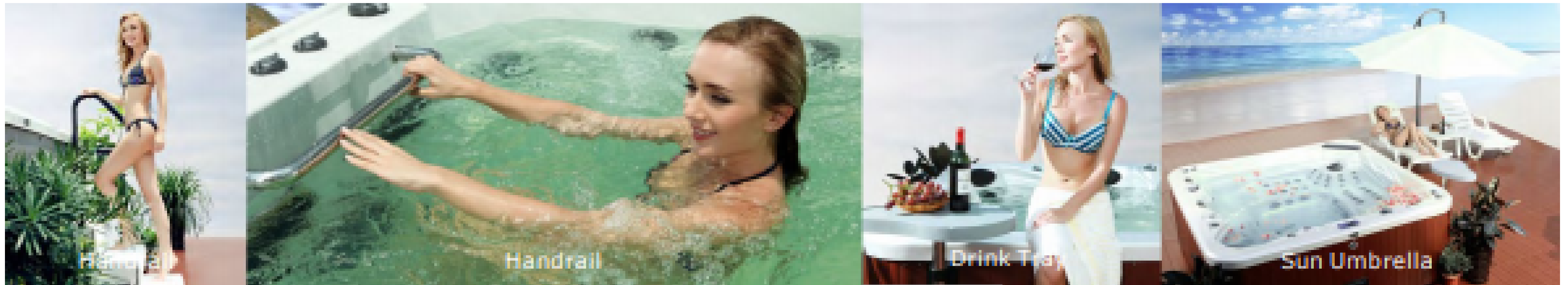
## Stereo Systems

Fully Integrated Bluetooth Audio  
Two Speakers  
Waterproof Pop-up TV





# AROMATIC SYSTEM



**We make Hot tubs so affordable that you can  
enjoy luxury at your comfort..  
" Your wellbeing is our motto"**





POLSPAS